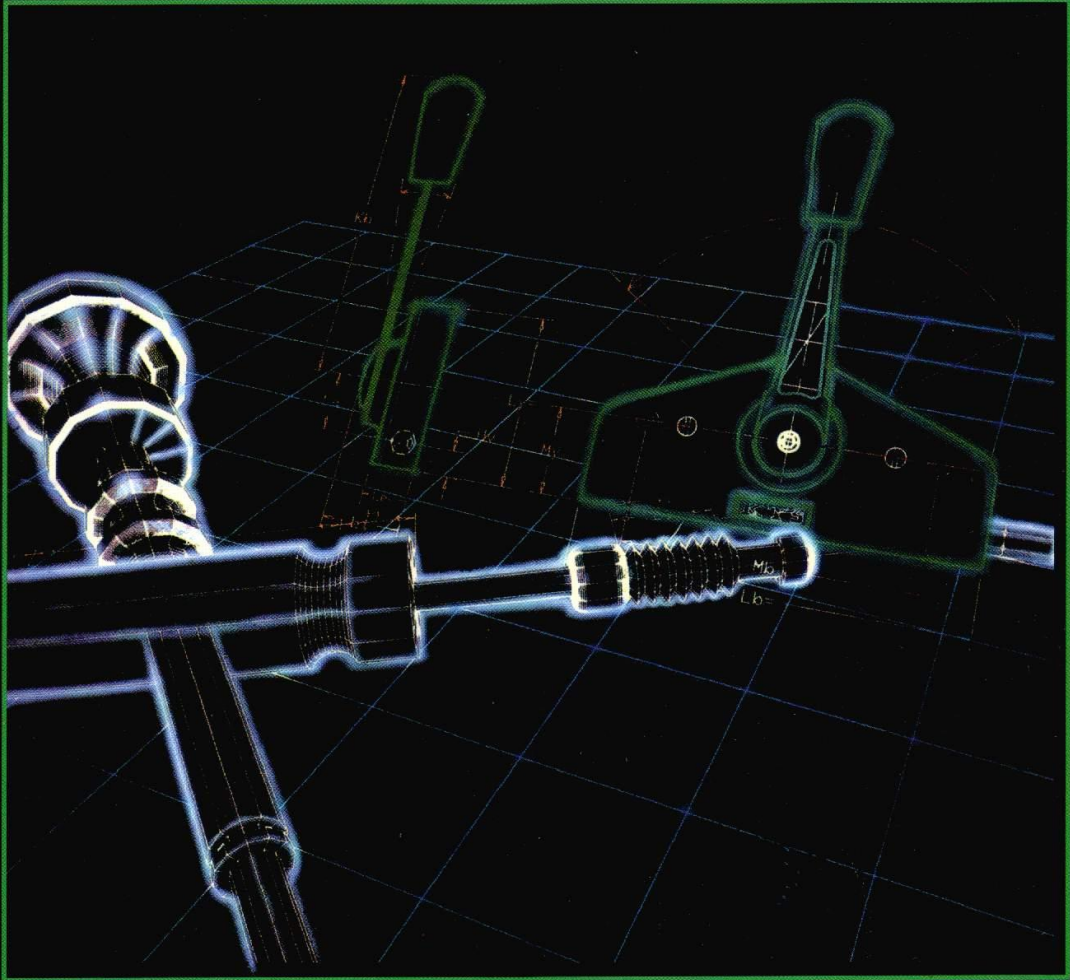
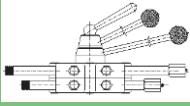




İTME VE ÇEKME KUMANDA SİRALLERİ
PUSH-PULL CABLES & CONTROL SYSTEMS



KAYA
TORNA SİRİRAL
SAN. ve TİC. A.Ş.



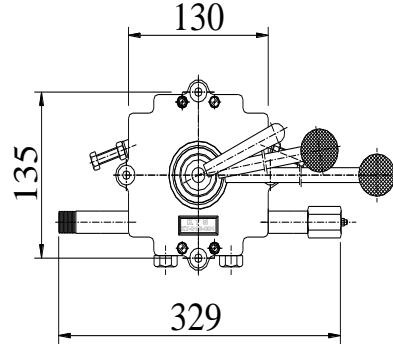
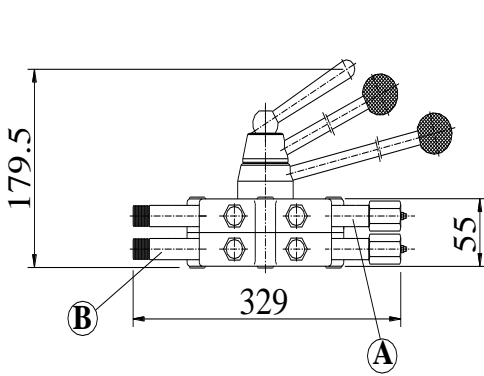
KT-016-001

CONTROL BOX KONTROL KUTUSU

KTS

PUSH -PULL CABLES & CONTROL SYSTEMS

KTS



KT-016-001

Transmixer throttle and hydraulic motor control box.

Outer Casing : Aluminium,
Gearset : Steel

Standard Stroke A : 120 mm

Standard Stroke B : 85 mm

The stroke will be increased to 200 mm with customers request

KT-016-001

Transmikser gaz ve hidrolik motor kontrol kutusudur.

Dış Gövde : Alüminyum

Dişli Takımı : Çelik

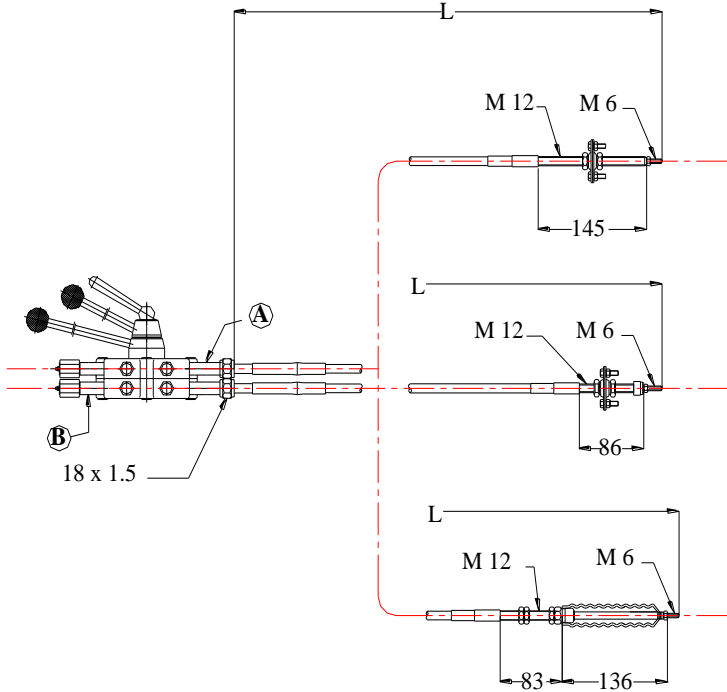
Standart Strok A : 120 mm

Standart Strok B : 85 mm

Müşteri isteğine göre strok boyları 200 mm ye kadar arttırılabilir.

CABLE TYPES

KULLANILAN KABLO TİPLERİ



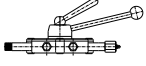
Type 1
AÇIKLAMA

Type 2
AÇIKLAMA

Type 3
AÇIKLAMA



İTME VE ÇEKME KUMANDA SİRALLERİ & KONTROL KUTULARI



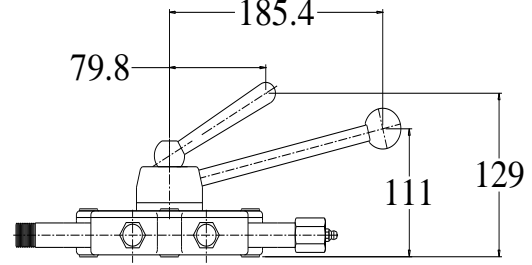
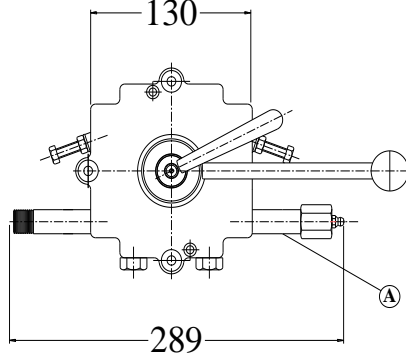
KT-016-A

CONTROL BOX KONTROL KUTUSU

KTS

PUSH -PULL CABLES & CONTROL SYSTEMS

KTS



KT-016-A

Transmixer throttle and hydraulic motor control box.

Outer Casing : Aluminium,

Gearset : Steel

Standard Stroke A : 85 mm

The stroke will be increased to 200 mm with customers request

KT-016-A

Transmikser gaz ve hidrolik motor kontrol kutusudur.

Dış Gövde : Alüminyum

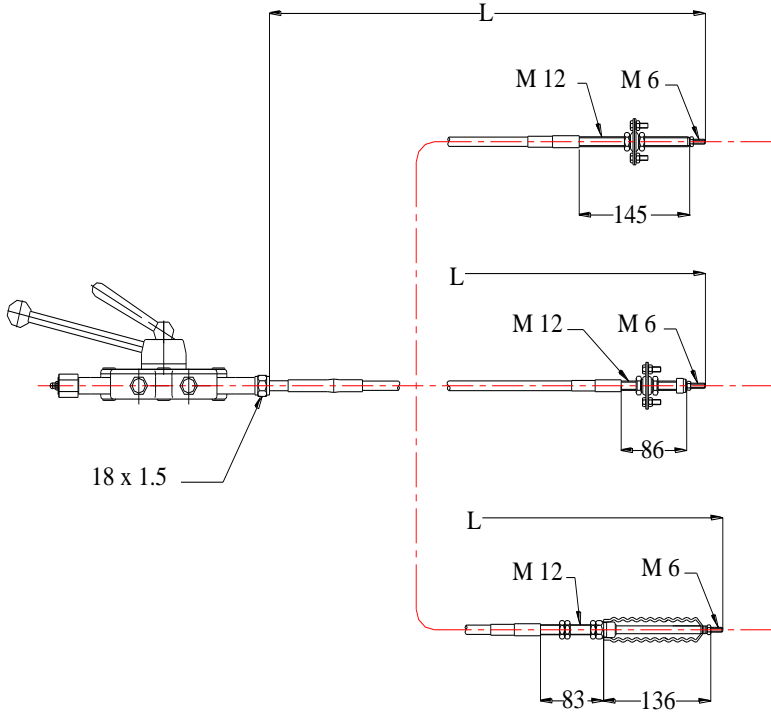
Dişli Takımı : Çelik

Standart Strok A : 85 mm

Müşteri isteğine göre strok boyları 200 mm ye kadar arttırılabilir.

CABLE TYPES

KULLANILAN KABLO TİPLERİ



Type 1
AÇIKLAMA

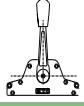
Type 2
AÇIKLAMA

Type 3
AÇIKLAMA

KTS

®

İTME VE ÇEKME KUMANDA SİRALLERİ & KONTROL KUTULARI



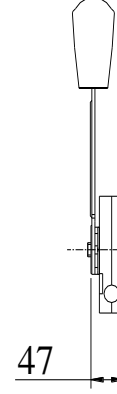
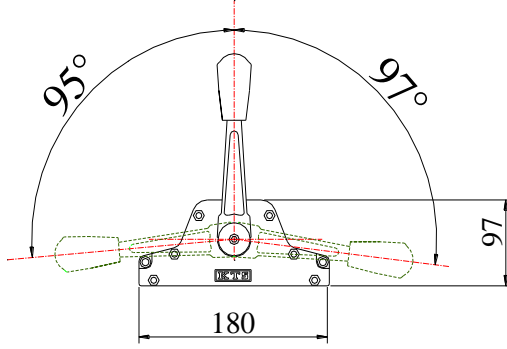
KT-045

CONTROL BOX KONTROL KUTUSU

KTS

PUSH -PULL CABLES & CONTROL SYSTEMS

KTS



KT-045

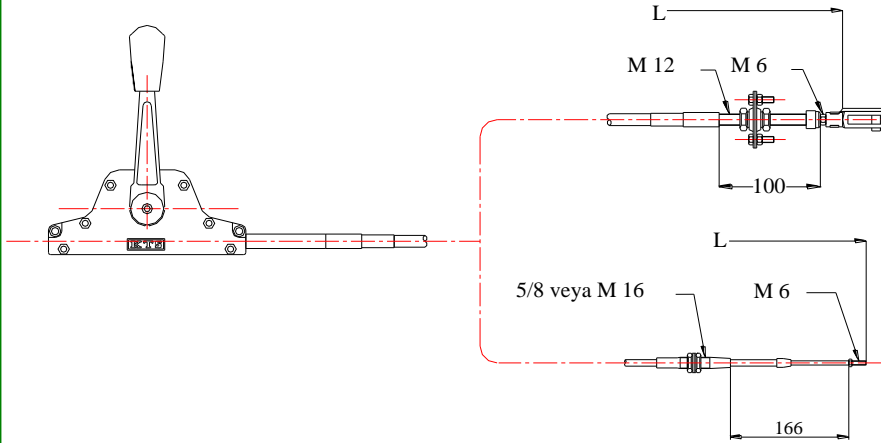
It has a construction to be used reliably on throttle and hydraulic motor control and other mechanical transmission.
Stroke : 75 mm
Outer Casing : Aluminium,
Inside Gearset : Zamak

KT-045

Gaz, hidrolik, motor ve diğer mekanik aktarımlarda güvenle kullanılabilir.
Strok : 75 mm
Dış Gövde : Alüminyum
İç Dişli Takımı : Zamak

CABLE TYPES

KULLANILAN KABLO TİPLERİ



Type 1
AÇIKLAMA

Type 1
AÇIKLAMA



İTME VE ÇEKME KUMANDA SİRALLERİ & KONTROL KUTULARI



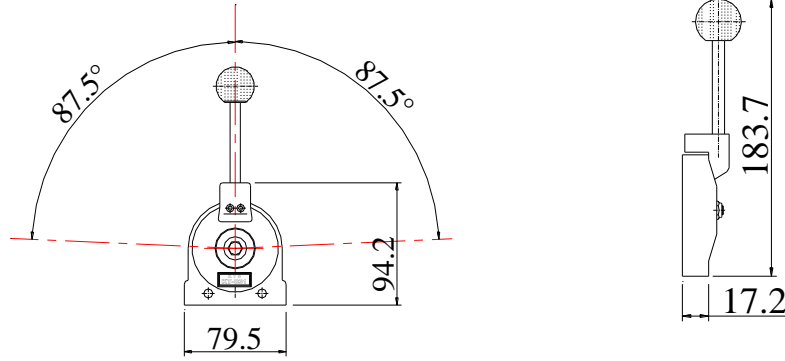
KT-031

CONTROL BOX KONTROL KUTUSU

KTS

PUSH -PULL CABLES & CONTROL SYSTEMS

KTS



KT-031

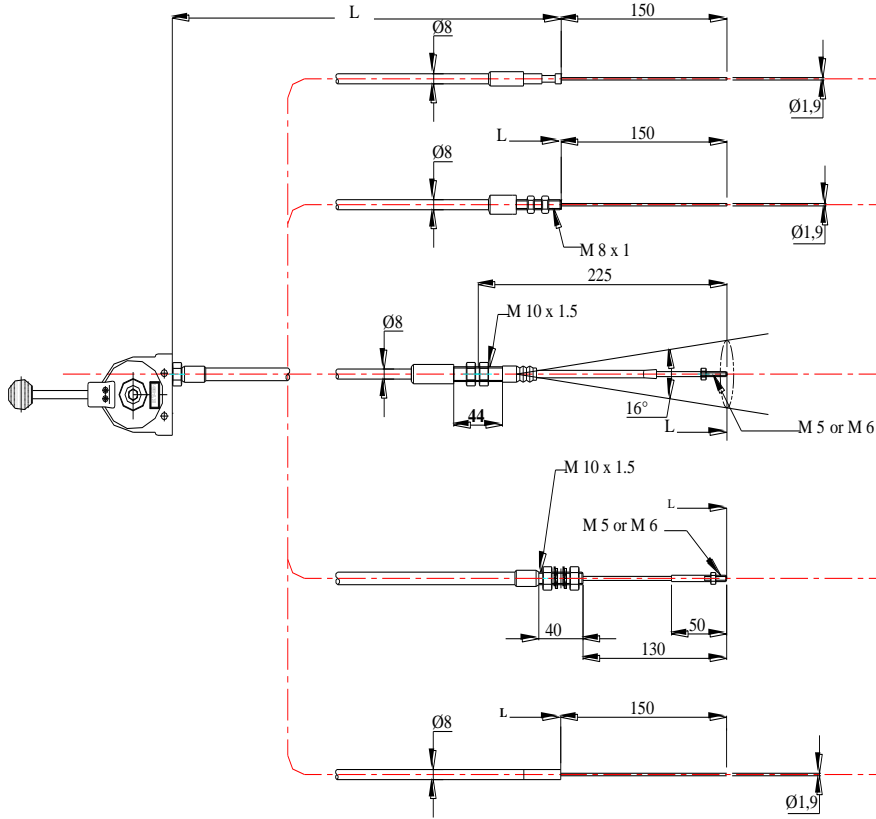
It is an ideal control box for low powers.
Stroke : 93 mm
Material : Aluminium

KT-031

Düşük güçler için ideal kontrol kutusudur.
Strok : 93 mm
Malzeme : Alüminyum

CABLE TYPES

KULLANILAN KABLO TİPLERİ



Type 1
AÇIKLAMA

Type 2
AÇIKLAMA

Type 3
AÇIKLAMA

Type 4
AÇIKLAMA

Type 5
AÇIKLAMA

KTS

®

İTME VE ÇEKME KUMANDA SİRALLERİ & KONTROL KUTULARI



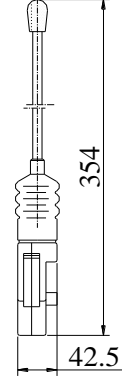
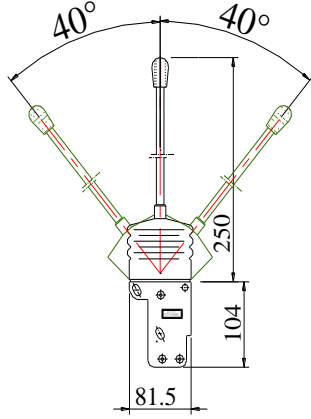
KT-025

CONTROL BOX KONTROL KUTUSU

KTS

PUSH -PULL CABLES & CONTROL SYSTEMS

KTS



KT-025

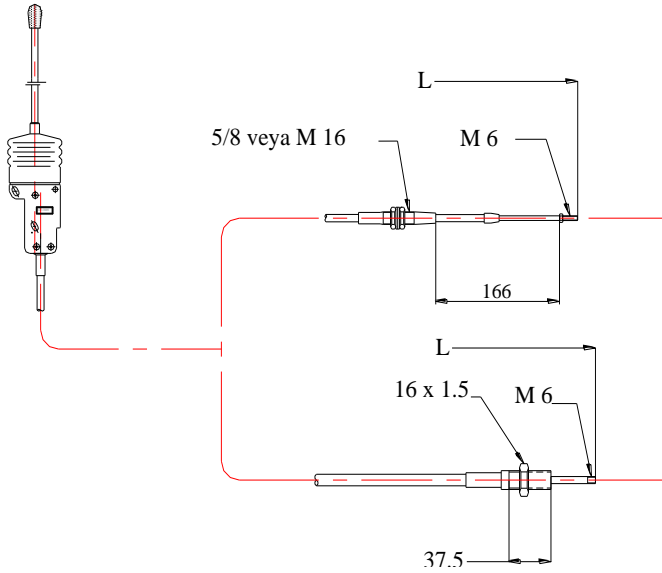
It is a control box ideal on hydraulic valve controls.
Stroke : 30 mm
Material : Zamak

KT-025

Hidrolik valf kontrollerinde ideal bir kontrol kutusudur.
Strok : 30 mm
Malzeme : Zamak

CABLE TYPES

KULLANILAN KABLO TİPLERİ



Type 1
AÇIKLAMA

Type 2
AÇIKLAMA

KTS

®

İTME VE ÇEKME KUMANDA SPİRALLERİ & KONTROL KUTULARI



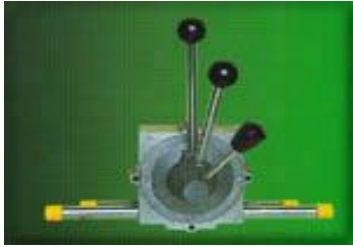
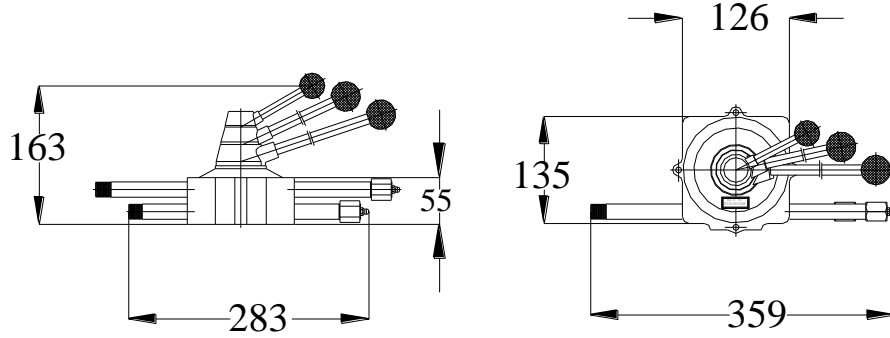
KT-015-002

CONTROL BOX KONTROL KUTUSU

KTS

PUSH - PULL CABLES & CONTROL SYSTEMS

KTS



KT-015-002

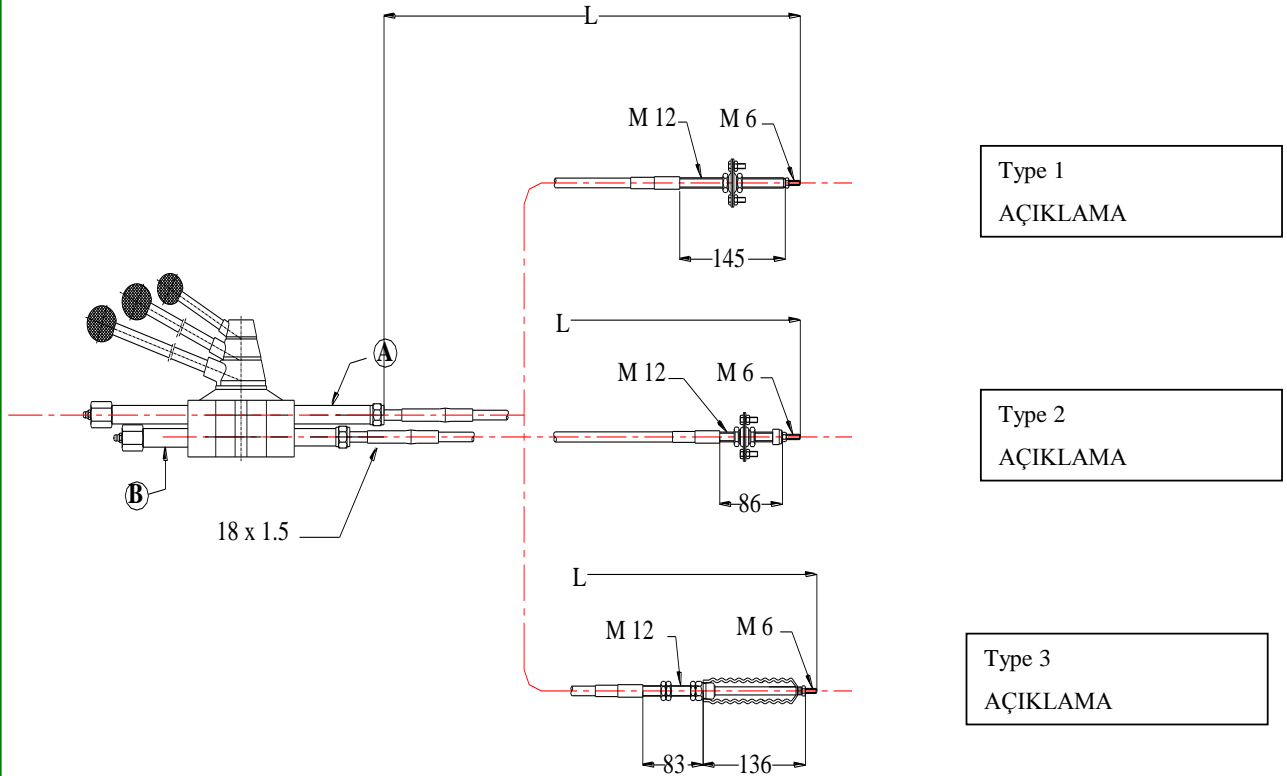
Transmikser throttle and hydraulic motor control box.
Outer casing : Aluminium,
Gearset : Zamak

KT-015-002

Transmikser gaz ve hidrolik motor kontrol kutusudur.
Dış Gövde : Alüminyum
Dişli Takımı : Zamak

CABLE TYPES

KULLANILAN KABLO TİPLERİ



KTS

İTME VE ÇEKME KUMANDA SİRALLERİ & KONTROL KUTULARI



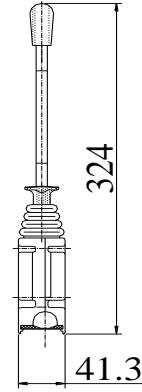
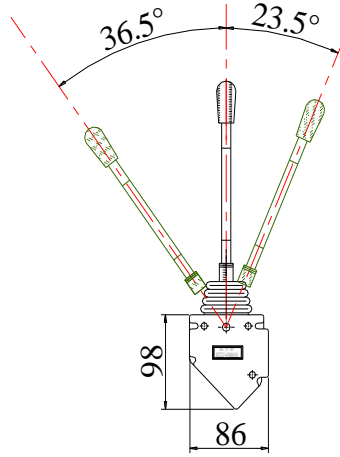
KT-020

**CONTROL BOX
KONTROL KUTUSU**

KTS

PUSH - PULL CABLES & CONTROL SYSTEMS

KTS



KT-020

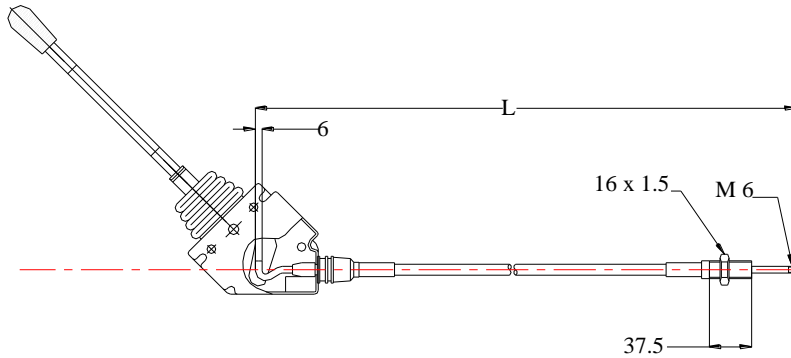
It is an ideal control box for low powers on hydraulic valve control.
Stroke : 25mm
Material : Zamak

KT-020

Düşük güçler için hidrolik valf kontrolünde ideal bir kontrol kutusudur.
Strok : 25 mm
Malzeme : Zamak

CABLE TYPES

KULLANILAN KABLO TİPLERİ



Type 1
AÇIKLAMA

KTS

İTME VE ÇEKME KUMANDA SİRALLERİ & KONTROL KUTULARI



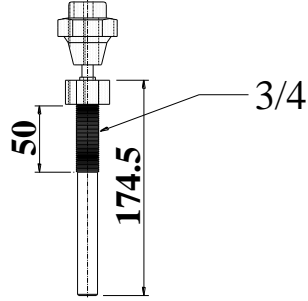
KT-005

CONTROL BOX KONTROL KUTUSU

KTS

PUSH -PULL CABLES & CONTROL SYSTEMS

KTS



KT-005

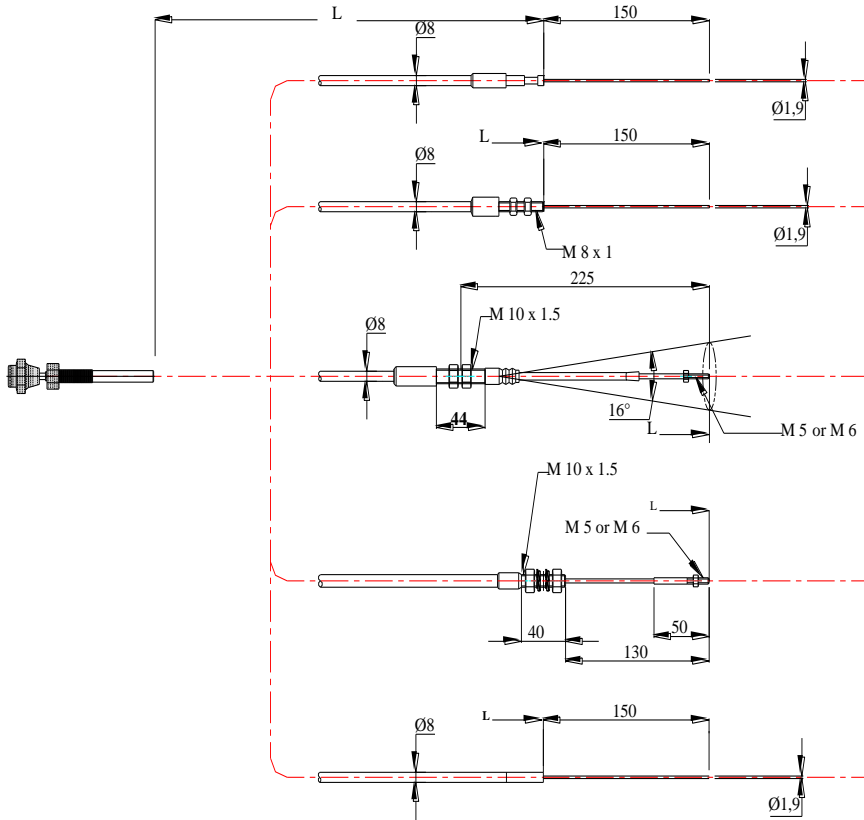
It is an ideal manuel control box for the precise control through turning the level to right and left.

KT-005

Elle sağa sola çevrilerek hassas kontrol-lerde ideal bir kontrol kutusudur.

CABLE TYPES

KULLANILAN KABLO TİPLERİ



Type 1
AÇIKLAMA

Type 2
AÇIKLAMA

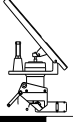
Type 3
AÇIKLAMA

Type 4
AÇIKLAMA

Type 5
AÇIKLAMA

KTS

İTME VE ÇEKME KUMANDA SPİRALLERİ & KONTROL KUTULARI



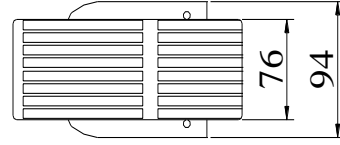
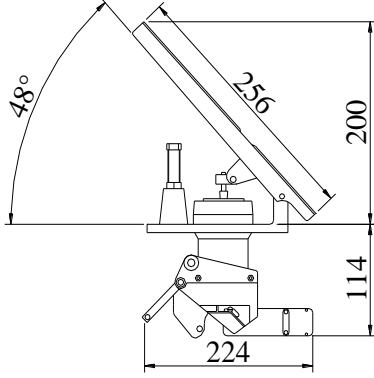
KT-050

**CONTROL BOX
KONTROL KUTUSU**

KTS

PUSH -PULL CABLES & CONTROL SYSTEMS

KTS



KT-050

Gaz foot pedal.

Principle of operation : By foot

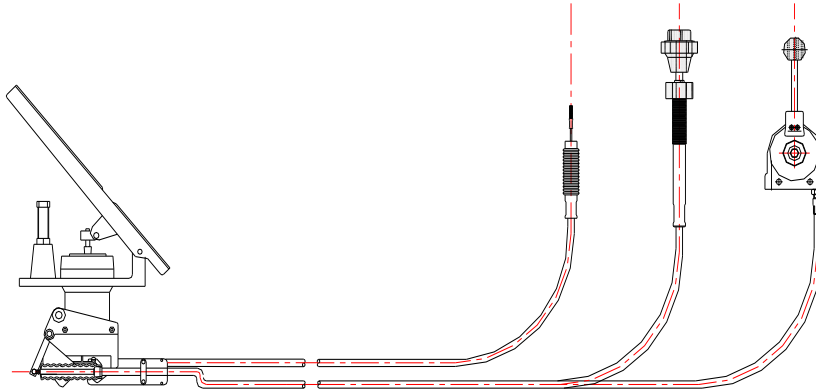
KT-050

Ayak gaz pedalı.

Çalışma Prensibi : Ayakla

CABLE TYPES

KULLANILAN KABLO TİPLERİ



Type 1

AÇIKLAMA

Type 2

AÇIKLAMA

Type 3

AÇIKLAMA

KTS

®

İTME VE ÇEKME KUMANDA SİRALLERİ & KONTROL KUTULARI



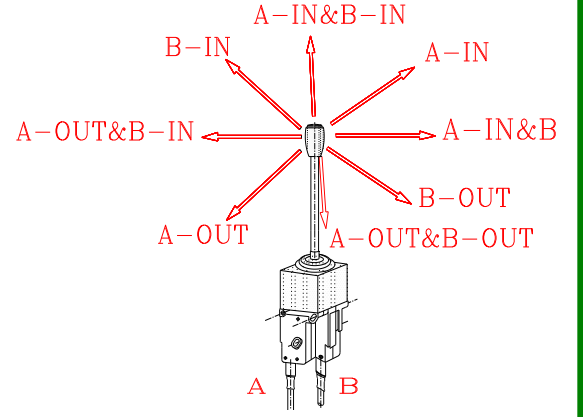
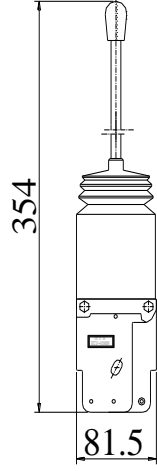
KT-025W

**CONTROL BOX
KONTROL KUTUSU**

KTS

PUSH -PULL CABLES & CONTROL SYSTEMS

KTS



KT-025W

It is a control box ideal on hydraulic

valve controls.

Stroke : 30 mm

Material : Zamak

KT-025W

Hidrolik valf kontrollerinde ideal bir

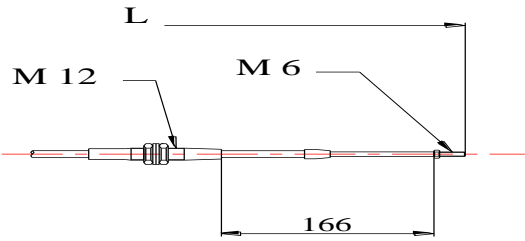
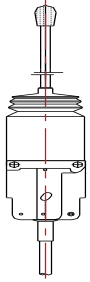
kontrol kutusudur.

Strok : 30 mm

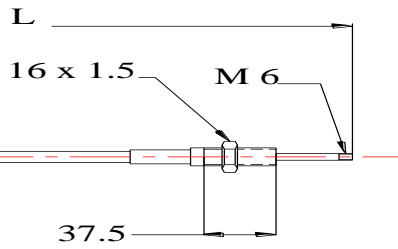
Malzeme : Zamak

CABLE TYPES

KULLANILAN KABLO TİPLERİ



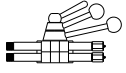
Type 1
AÇIKLAMA



Type 2
AÇIKLAMA

KTS

İTME VE ÇEKME KUMANDA SİRALLERİ & KONTROL KUTULARI



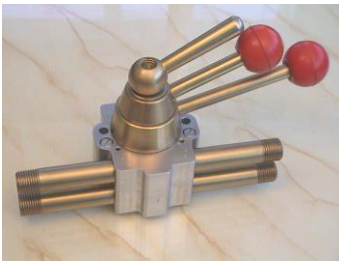
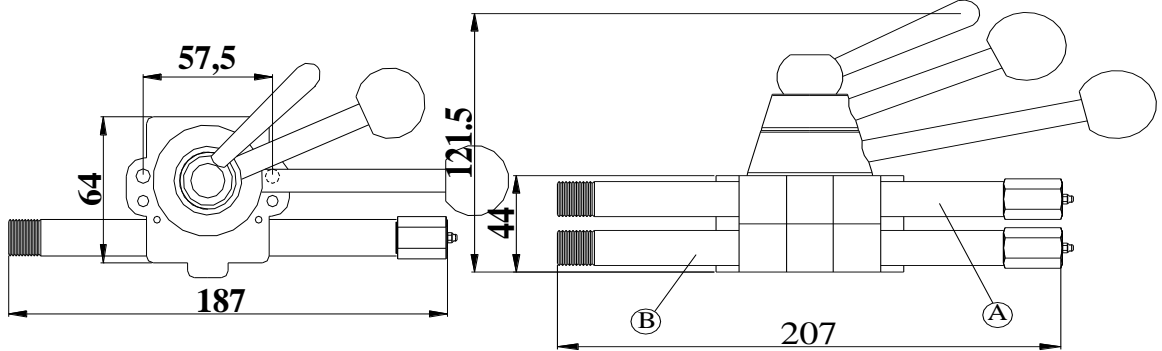
KT-010-001

CONTROL BOX KONTROL KUTUSU

KTS

PUSH - PULL CABLES & CONTROL SYSTEMS

KTS



KT-010-001

It is used for accelerator pedal, gear, valve and other mechanical control

Outer Casing: Aluminium,

Gearset: Steel

Standard Stroke: A=120mm

B= 60 mm

The stroke will be increased to 150 mm with customers request

KT-010-001

Gaz vites valf ve diğer mekanik kontroller için kullanılabilir.

Dış gövde: Alüminyum

Dişli takımı: Çelik

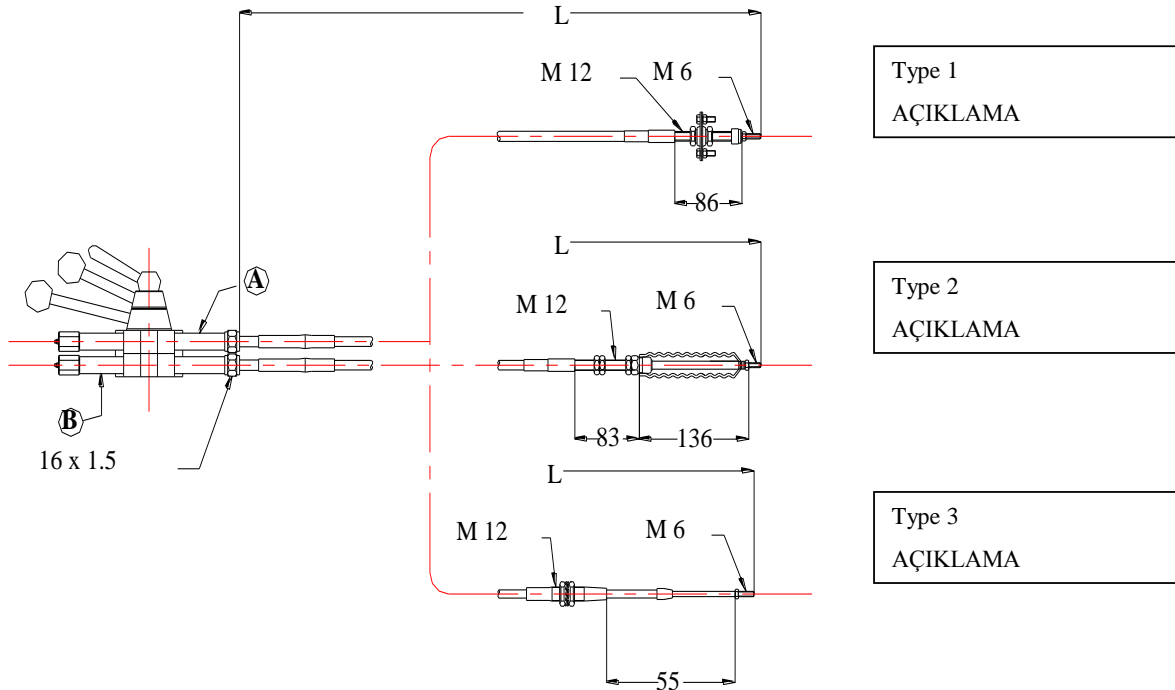
Standart Strok A: 120 mm

B: 60 mm

Müşteri isteğine göre strok 150 mm ye kadar arttırılabilir.

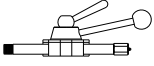
CABLE TYPES

KULLANILAN KABLO TİPLERİ



KTS

İTME VE ÇEKME KUMANDA SİRALLERİ & KONTROL KUTULARI



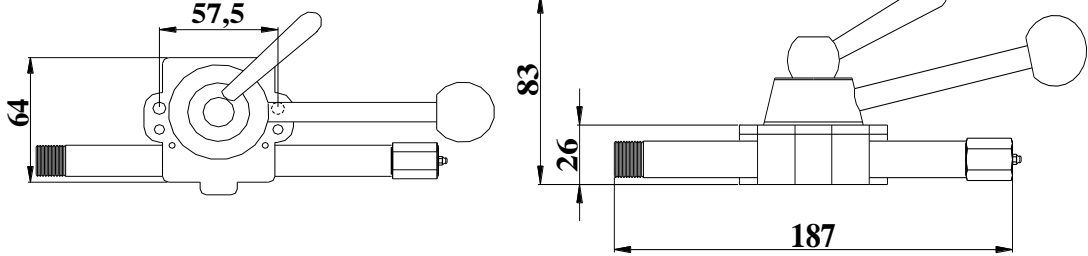
KT-010-002

CONTROL BOX KONTROL KUTUSU

KTS

PUSH -PULL CABLES & CONTROL SYSTEMS

KTS



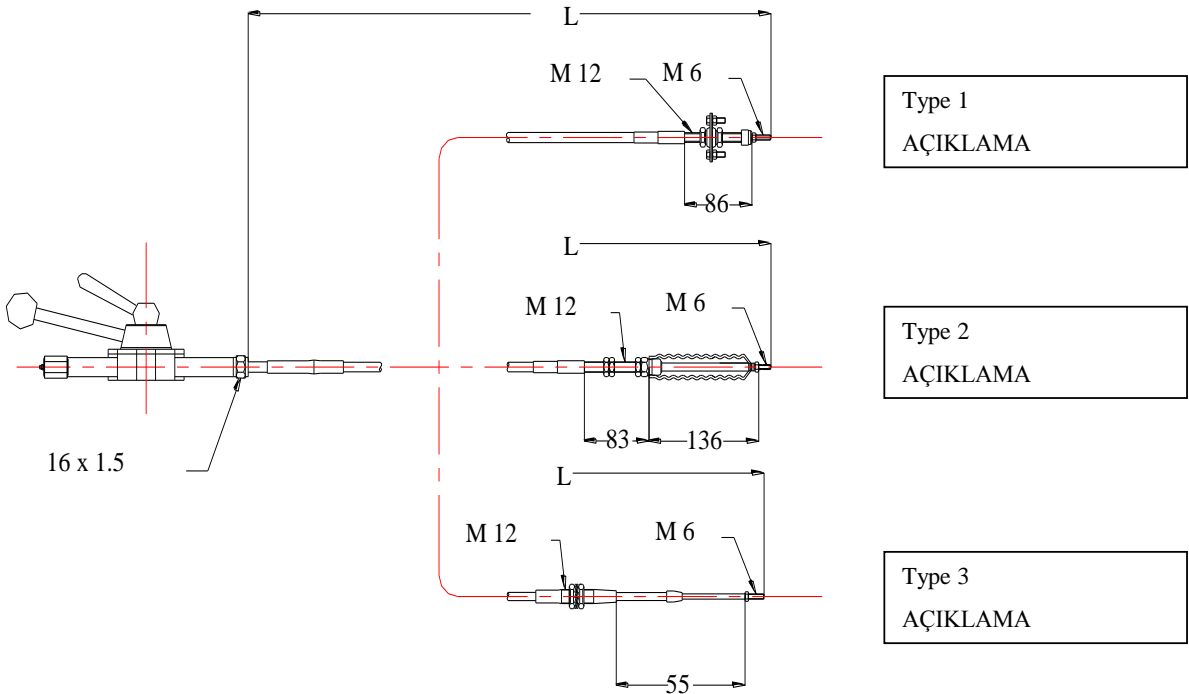
KT-010-002

It is used for accelerator pedal, gear, valve and other mechanical control
Outer Casing: Aluminium,
Gearset: Steel
Standard Stroke: 60 mm
The stroke will be increased to 150 mm with customers request

KT-010-002

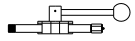
Gaz vites valf ve diğer mekanik kontroller için kullanılabilir.
Dış gövde: Alüminyum
Dişli takımı: Çelik
Standart Strok : 60 mm
Müşteri isteğine göre strok 150 mm ye kadar arttırılabilir.

KULLANILAN KABLO TİPLERİ



KTS

İTME VE ÇEKME KUMANDA SİRALLERİ & KONTROL KUTULARI



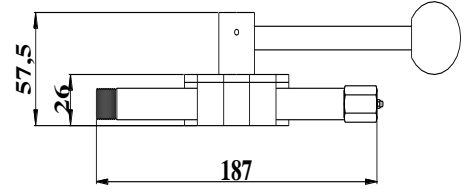
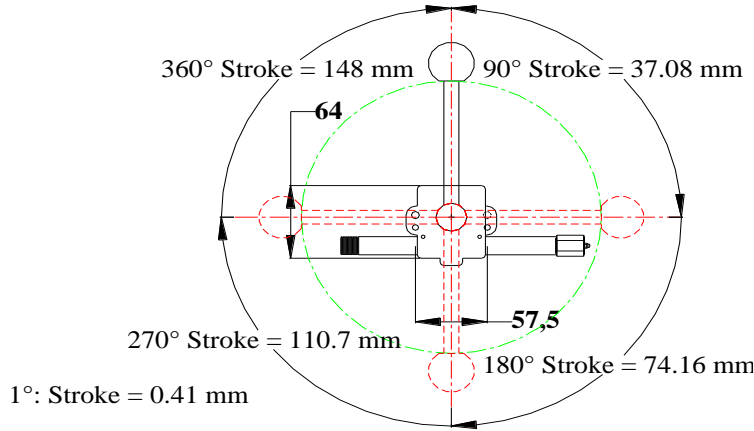
KT-010-003

CONTROL BOX KONTROL KUTUSU

KTS

PUSH -PULL CABLES & CONTROL SYSTEMS

KTS



KT-010-003

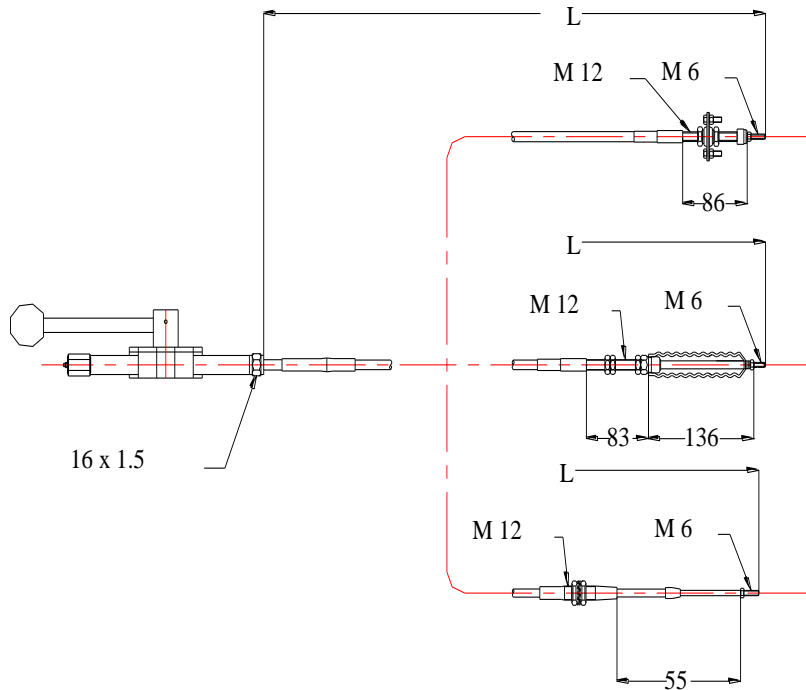
It is used for accelerator pedal, gear, valve and other mechanical control
Outer Casing: Aluminium,
Gearset: Steel
Standard Stroke: 60 mm
The stroke will be increased to 150 mm with customers request.

KT-010-003

Gaz vites valf ve diğer mekanik kontroller için kullanılabilir.
Dış gövde: Alüminyum
Dişli takımı: Çelik
Standart Strok A: 60 mm
Müşteri isteğine göre strok 150 mm ye kadar arttırılabilir.

CABLE TYPES

KULLANILAN KABLO TİPLERİ



Type 1
AÇIKLAMA

Type 2
AÇIKLAMA

Type 3
AÇIKLAMA

KTS

İTME VE ÇEKME KUMANDA SİRALLERİ & KONTROL KUTULARI



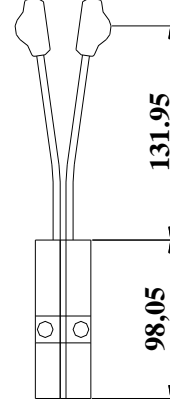
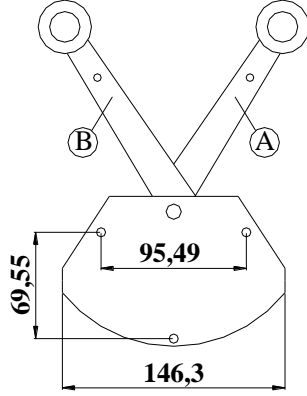
KT-035-002

CONTROL BOX
KONTROL KUTUSU

KTS

PUSH -PULL CABLES & CONTROL SYSTEMS

KTS



KT-035-002

KT-035-001

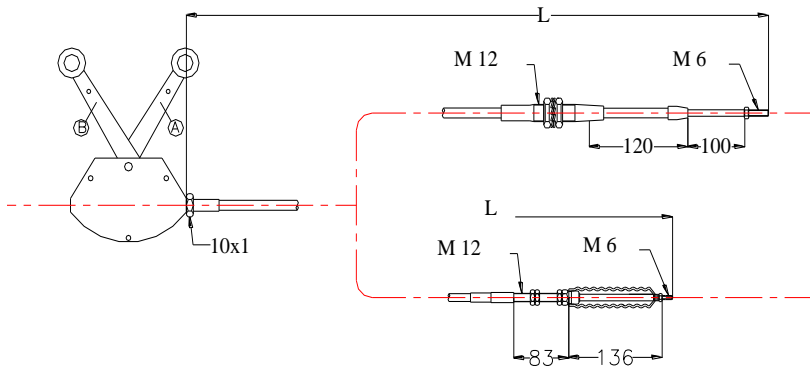
Genel maksatlı ideal bir kontrol kutusudur. El gazı ve diğer mekanik kontrollar için.

Dış gövde: Alüminyum

Strok : A=100 mm

B=100 mm

KULLANILAN KABLO TİPLERİ



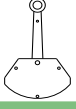
Type 1
AÇIKLAMA

Type 2
AÇIKLAMA

KTS

R

İTME VE ÇEKME KUMANDA SİRALLERİ & KONTROL KUTULARI



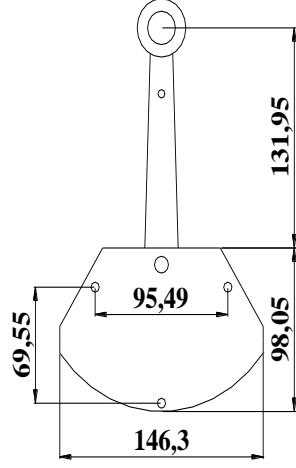
KT-035-001

CONTROL BOX KONTROL KUTUSU

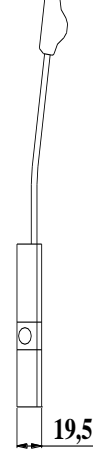
KTS

PUSH - PULL CABLES & CONTROL SYSTEMS

KTS



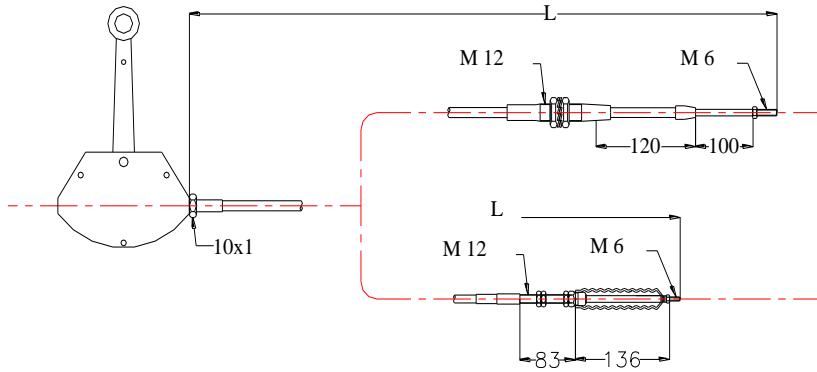
KT-035-001



KT-035-001

Genel maksatlı ideal bir kontrol kutusudur. El gazı ve diğer mekanik kontrollar için.
Dış gövde: Alüminyum
Strok : 100 mm

KULLANILAN KABLO TİPLERİ



Type 1
AÇIKLAMA

Type 2
AÇIKLAMA

KTS

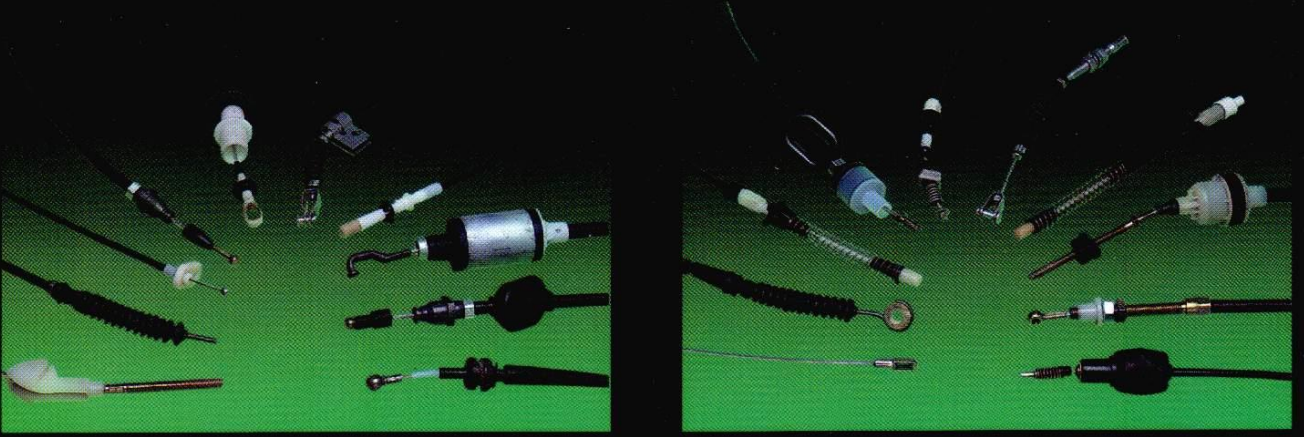
®

İTME VE ÇEKME KUMANDA SİRALLERİ & KONTROL KUTULARI

ÇEKME KABLO
KUMANDA SİSTEMLERİ



PULL-ONLY CABLES
CONTROLS SYSTEMS



GAZ-DEBRİYAJ-FREN ve DİĞER
OTOMOTİV KABLARINDAN BİR KESİT

LITTLE PROFILE
FOR THROTTLE-CLUTCH-BRAKE AND OTHER AUTOMOTIVE CABLES

